



SALEEN SPEEDLAB ROCKER PANELS KIT



INSTALLATION MANUAL: 2005 to 2009 Mustang

P/N: 10-8002-C12166C

SALEEN

Saleen Performance, Inc. 1225 East Maple Rd. Troy, MI 48083 248-743-4800
www.saleen.com



***IF YOU ARE NOT EXPERIENCED IN THE
AREA OF AUTOMOTIVE MECHANICS, WE
STRONGLY URGE THAT YOU REFER THIS
INSTALLATION TO A CERTIFIED INSTALLER
OR TECHNICIAN***



Saleen Speedlab Rocker Panels Kit Installation Guide for 2005 to 2009 Mustang

Thank you for buying the Saleen Speedlab Rocker Panels Kit for the 2005 to 2009 Mustang. We appreciate your business, and we hope you enjoy your product.

For your benefit, please read the following instructions completely and thoroughly before attempting to install the rocker panels kit. Many questions have been received from customers about the installation of our products could have been easily solved by information listed in the accompanying installation guide. We want you to enjoy the product in its fully functional state, and reading this tutorial is the first step to getting you on your way to a more rare and attractive Mustang.

NOTE: Please keep all hardware you remove from your stock Mustang, as much of it will be reused to install the new rocker panels kit.

YOU ARE RESPONSIBLE FOR PAINTING THE ROCKER PANELS KIT. SALEEN RECOMMENDS HIRING A PROFESSIONAL PAINTER WHO IS FAMILIAR WITH TPO PLASTIC, AND THAT YOU PAINT THE BODY KIT BEFORE ATTEMPTING ANY SUBASSEMBLY. IF YOU CHOOSE TO PAINT BODY PIECES BEFORE DOING SUBASSEMBLY OPERATIONS, LAY THE PAINTED PARTS ON A SOFT CLOTH DURING SUBASSEMBLY. IF YOU PAINT THE PIECES AFTER SUBASSEMBLY OPERATIONS, BE CAREFUL NOT TO SPRAY THE UNDERSIDE OF THE PARTS, ESPECIALLY WHERE TAPE IS USED; SPRAYING THE TAPE MAY DAMAGE THE BOND TO THE BODY PIECE, WHICH MAY CAUSE THE BODY KIT TO FALL OFF THE CAR A SHORT TIME AFTER INSTALLATION.

Again, thank you for choosing Saleen!



OBTAIN THE FOLLOWING TOOLS:

- Panel puller
- 80 grit Sand paper
- Paint thinner
- 3M VHB ¾" Double sided tape, clear (20 ft.; McMaster# 76665A74)
- Razor blade
- 20 oz. Pneumatic Gun (Cox Ltd.: Item# 61006-20)
- Glass & Pinchweld Primer (C.R. Laurence Co. Catalog# PWR4P)
- High Viscosity Windshield Adhesive (urethane; C.R. Laurence Co. Catalog# PWR615HV)
- 3M Automotive adhesion promoter (3M #06396)
- Masking tape
- Drill
- Philips #2 bit

I Rocker Panels Removal

Obtain the Following Tools:

- Panel puller

Order of Operations:

1. Remove 8 Christmas trees (push screws) under rocker panel; keep all these for installation of the new rocker panels. (three of the push screws are indicated in **Figure 1**)
2. Remove two push screws from front wheel well. (**Figure 2**) Make sure to keep the push screws; they will be reused.
3. Grab rocker panel firmly from rear wheel and pull down, then out away from the car.
4. **Figure 3** is a picture of the end result. Make sure to remove the eight white plastic clips from the rocker panel because they will be reused.

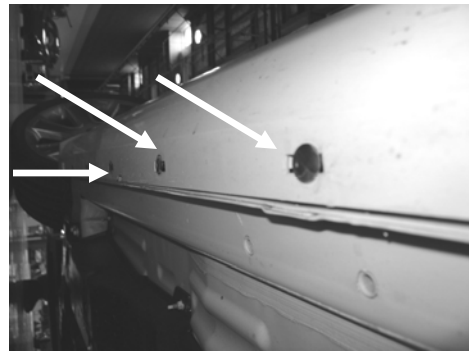


Figure 1

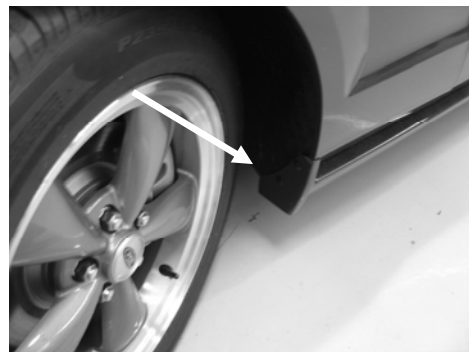


Figure 2



Figure 3



II Rocker Panels Subassembly

Part Number	Description	Qty.
06-1102-C11094A	Perf Screen rocker 2005 S281	4
06-1101-C09588F	Body rockers LH 05 Mustang	1
06-1101-C09589F	Body rockers RH 05 Mustang	1
00-9001-C11634*	screw phillips head flatp top #4x3/8" blk oxide	8

Obtain the Following Tools:

- 80 grit Sand paper
- paint thinner
- 3M Adhesion promoter #06396
- ¾" automotive Double sided tape, clear VHB (20 ft.)
- Razor blade
- Drill
- Philip's #2 bit

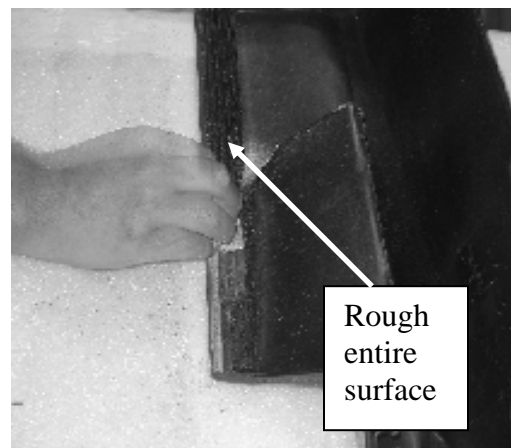


Figure 1

Order of Operations:

1. **IF** the rocker panel is already painted, use paint thinner on the edge of the rocker panel as specified by the line in **Figure 5**, and along the top edge as shown in **Figure 1**.
2. For all rocker panels, painted and unpainted, use sand paper to rough up the surfaces indicated in **Figures 1 and 5**. Use paint thinner and paper towels to clean those areas that were sanded. Make sure the area is dry before proceeding.



Figure 2

3. Use one swipe of 3M-adhesion promoter on the areas that were sanded. (**Figures 2 and 4**)
4. Apply double-sided tape (the appropriate tape may be obtained from McMaster-Carr at www.mcmaster.com; part number 76665A74) to the top edge of the rocker panel; don't go over the top edge. Make sure that the tape is pressed firmly against the ribbed edge. (**Figure 3**)
5. Using the drill with the Philips' head bit, secure the two screens into place on each rocker panel using two screws per screen.

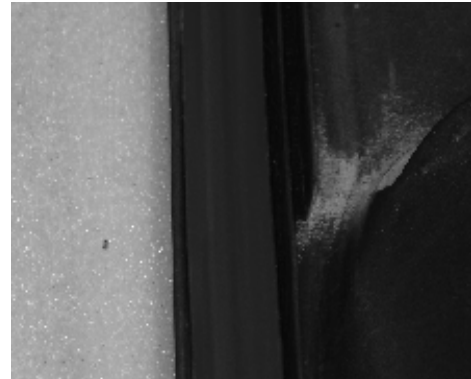


Figure 3

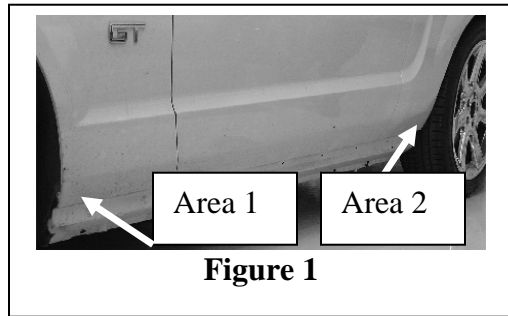


III Rocker Panels Installation

Part Number	Description	Qty.
06-1101-C09588	Body Rockers LH 05 Mustang	1
06-1101-C09589	Body Rockers RH 05 Mustang	1
00-9006-C10219*	Fastener Christmas Tree .276"-.286" Dia 2.73"	16
06-1102-C11424	Rocker Panel Spacer 1.5" Long	4
06-1102-C11425	Rocker Panel Spacer 1.75" Long	6
06-1102-C11426	Rocker Panel Spacer 2" Long	6

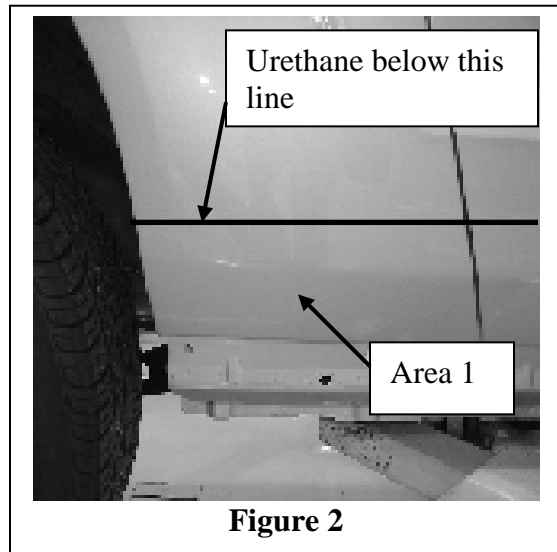
Obtain the Following Tools:

- Urethane gun (see p.4)
- Urethane primer (see p.4)
- 3M Automotive adhesion promoter #06396
- High Viscosity Windshield Adhesive (see p. 4)
- Glass & Pinch Weld Primer (see p. 4)
- Pneumatic Gun (see p. 4)
- 3M automotive VHB tape (10 ft.)
- Masking tape



Order of Operations:

1. Clean the areas shown with a wet rag. (Figure 1) Figures 2 & 3 are close ups.



2. Urethane primer must be applied to the car. The primer goes under the crease in the fenders. Refer to **Figures 2 & 3**. Refer to **Figures 4 & 5** for finished product. Make sure to stop the primer a 1/2 inch from each door jam. (**Figure 6**)

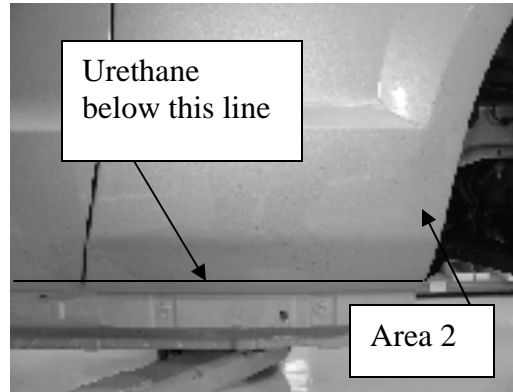


Figure 3



Figure 4

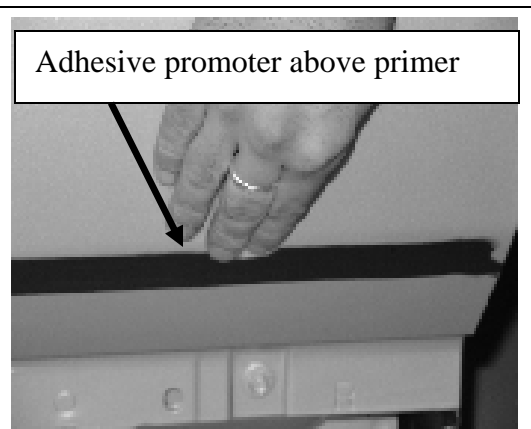


Figure 5

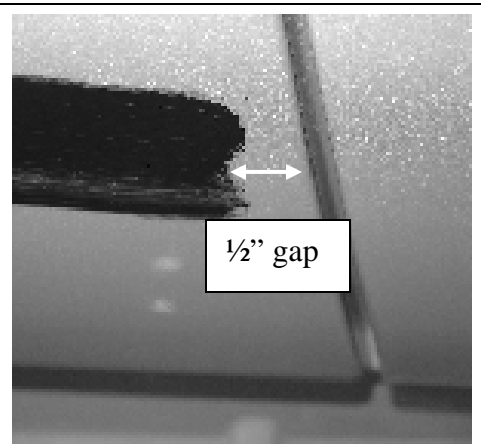


Figure 6

3. Remove the backing on the double-sided tape that is attached to the rocker. Below the double-sided tape put a bead of urethane in the groove the runs the entire length of the inside of the rocker panel. **Figure 7** shows the entire area and **Figure 8** shows a close up of the amount of urethane used. Make sure the bead of urethane stands a quarter of an inch off the groove so it will reach the body panels; if the bead is not thick enough it will not adhere to the car.
4. First make sure all the stock Christmas trees are removed. (**Figure 9**)
5. Make sure the white clips (**Figure 10**) are secure in the rocker panel. If any of the brackets are loose place foam behind them to stiffen them up (**Figure 11**).
6. With the car door open, line up the white clips with the slots in the car. (**Figure 12**) you only need 5 clips from the old rocker panel to install the new one. (**Figure 10**)

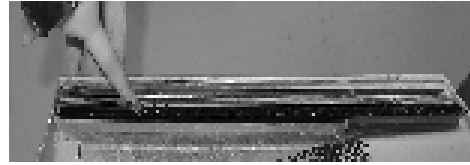


Figure 7

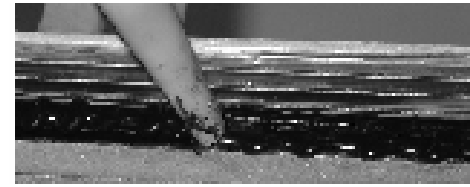


Figure 8



Figure 9

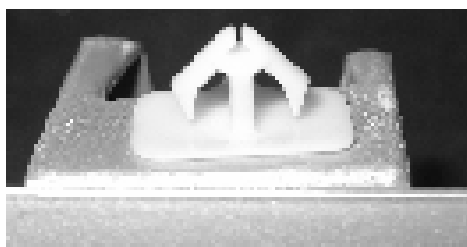


Figure 10



Figure 11



Figure 12

7. Gently tap the clips in place by hand. Then push the each side into place. (**Figures 13 and 14**). Make sure the gaps are even in each wheel well, and that the door does not hit the rocker when opened and closed.
8. Underneath the rocker panel there are eight attachment points; the first three are indicated in **Figure 15**.
9. Obtain Christmas trees 00-9006-C10219* (eight per side). You will place spacers over each of the Christmas trees, and then install them into the locations indicated by **Figure 15**. For the first three holes, obtain three spacers 06-1102-C11425 (1.8") and insert into the first three holes behind the front wheel. Spacers 06-1102-C11424 (1.5") go in the next two holes. Spacers 06-1102-C11426 (2.0") go in the last three holes. Push the Christmas trees until they are flush with the bottom of the rocker panel.
10. Secure rocker panel with masking tape while urethane dries. Leave masking tape on for at least 24 hours before removing. Allow the urethane to cure for 24 hours before pulling on it. Make sure to clean any residue off the car and the rocker panel.

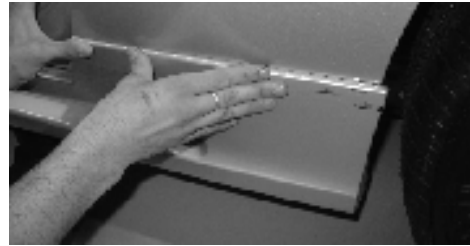


Figure 13



Figure 14

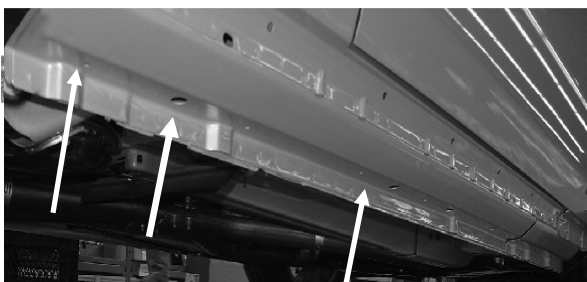


Figure 15

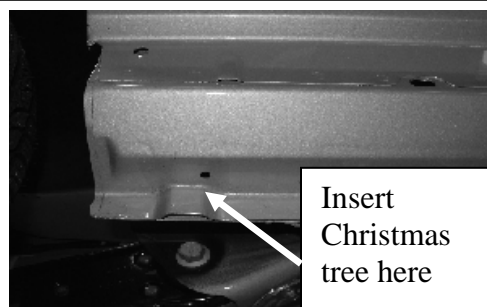


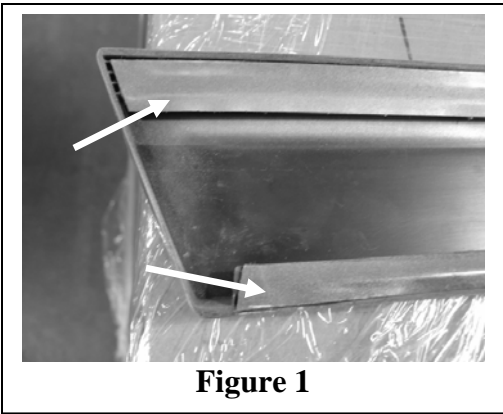
Figure 16



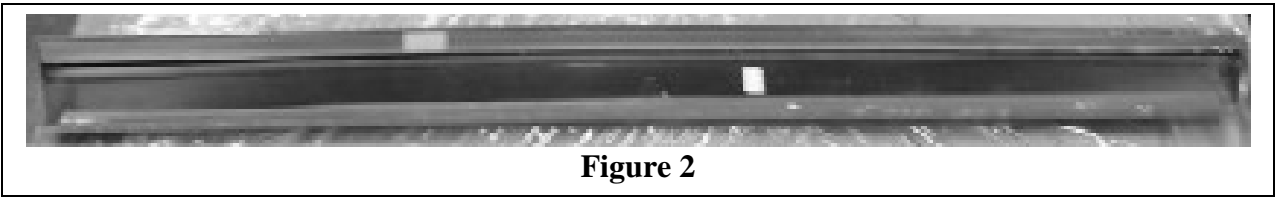
IV Door Cladding Subassembly

Part Number	Description	Qty.
06-1101-C09733C	Door Cladding LH 05 Mustang	1
06-1101-C09734C	Door Cladding RH 05 Mustang	1

- Obtain the Following Tools:**
- 80 grit sandpaper
 - paint thinner
 - 3M Automotive adhesion promoter
 - 3M double sided tape, 3/4" wide (10 ft.)



- Order of Operations:**
1. Using 80-grit sandpaper, sand the two tabs that run the length of each door cladding; repeat on both door claddings (Figure 1).
 2. Clean the tabs with paint thinner and paper towels.
 3. Apply 3M automotive adhesion promoter to the cleaned tabs.
 4. Cut a section of 3M double sided clear tape (00-9006-C08519*) to fit on each tab. (Figures 1,2)
 5. Apply the double sided tape and apply to both tabs on each door cladding.





V Door Cladding Installation

Part Number	Description	Qty.
06-1101-C09733C	Door Cladding LH 05 Mustang	1
06-1101-C09734C	Door Cladding RH 05 Mustang	1

Obtain the Following Tools:

- High Viscosity Windshield Adhesive (see p. 4)
- Glass & Pinchweld Primer (see p. 4)
- Pneumatic Gun (see p. 4)
- Masking tape

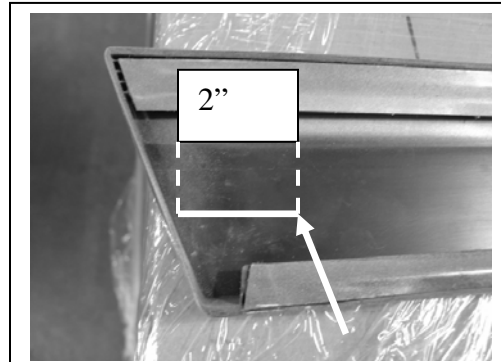


Figure 1

Order of Operations:

1. Obtain the passenger side door cladding (06-1102-C10863A).
2. Create a cylinder shaped pile of urethane $\frac{3}{4}$ inch tall, and about the size of a quarter in diameter. Center the pile midway between the two tabs, and 2 inches from the front of the cladding. (**Figure 1**).
3. With the door open, place passenger side door cladding on the passenger door, aligning the bottom edge of the cladding with the bottom edge of the door, and the front and rear ends of the cladding with the front and rear ends of the door. (**Figures 2,3**).
4. Repeat steps 2 and 3 for the driver side cladding (06-1102-C10862A).
5. Using the masking tape, tape the door cladding to the door and allow at least 24 hours for the urethane to cure before removing the tape.

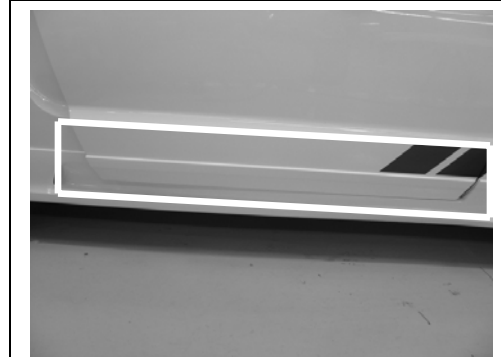


Figure 2

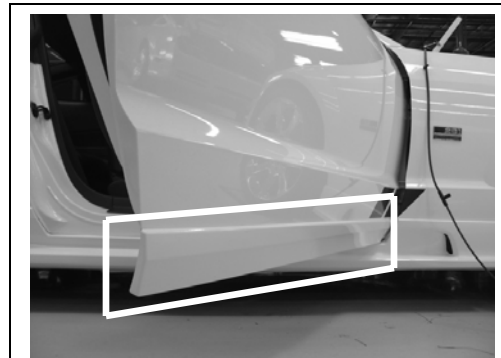


Figure 3